



## **BIG TED IS ALIVE AND WELL!**

These last couple of months have proved to be challenging  
The high temperatures forcing an unplanned hibernation!

The recent drop to the low 20's is a welcome relief  
Oops spoke too soon, temps are due to rise again soon.

Just in case you need reminding, click on the Sun to access advice from  
NHS CHOICES.



**At a recent meeting of the Solihull PPG Network:**

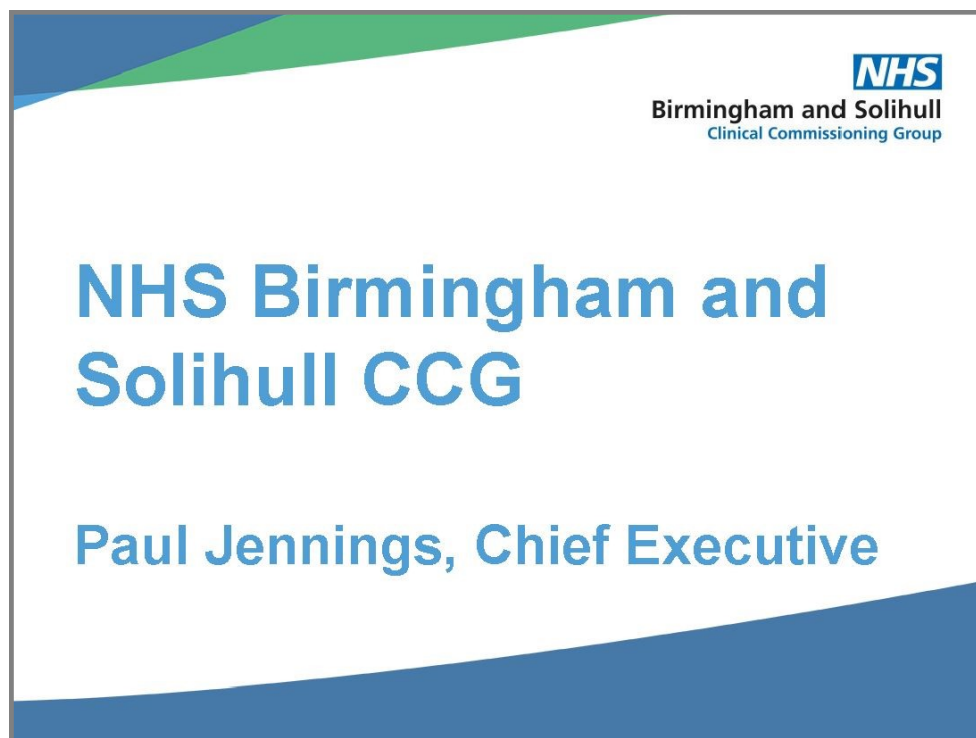


**Paul Jennings**

**Chief Executive**

**Birmingham and Solihull Clinical Commissioning Group**

**made the following presentation**



## Where we are now

- Merging the three CCGs was the first step in the journey.
- A focus on making the right decisions for our population through:
  - Clinical engagement
  - Public involvement
  - Staff engagement
- Establishing our position in the STP.

## Birmingham and Solihull CCG

Responsible for commissioning services for:



A budget of  
**£1.8 billion**  
(that's 2% of the overall NHS budget)



### Two clear areas of focus:



Commissioning services that deliver the aims, objectives and service improvements included in the STP, contracts with providers and the Operational Plan; and



Developing as strategic commissioner, strengthening place-based commissioning and provision, as well as developing and implementing the STP operating model

## Strategic commissioning

- Steering, not rowing.
- Population health management.
- Defining and articulating clinical pathways.
- Associating a budget for a population.
- Commissioning and contracting for outcomes.
- Defining and monitoring quality standards.
- Moving to a value-based contract.

## Moving to integrated care

- Work as one care system to address population health management issues, with the LAs and third sector.
- Tackle the challenges faced by the health and care system in a collective way.
- Commission connected pathways of care.
- Remove organisational boundaries to create a care system that feels joined up.
- Shifts the focus from organisations, to populations, whole system and places.
- Ensure sustainability, now, and for the future.

# How do we get there?

- Removing organisational/geographical boundaries, with a united approach across all partners.
- Challenging and changing the status quo.
- Defining who we are as an organisation, through developing clear ambition and values.
- Refreshing the communications and engagement strategy.
- Developing a clear organisational development plan.

## Governing body



Dr Peter Ingham  
Clinical Chair



Sir Tony Hawkhead  
Independent Vice  
Chair



Paul Jennings  
Chief  
Executive



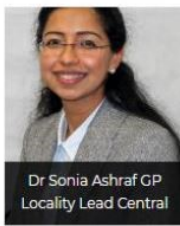
Dr Zafar Ali GP Locality  
Lead West



Dr Olav Van Loon GP  
Locality Lead North



Dr Rizwan Alidina GP  
Locality Lead East



Dr Sonia Ashraf GP  
Locality Lead Central



Dr John Davenport GP  
Locality Lead Solihull



Dr Clare Elliott GP  
Locality Lead South



Phil Johns  
Chief  
Finance Officer



Rhod Mitchell  
Independent Member



Anita Bhalla  
Independent Member



Stephen Beck  
Independent Member



Qulsom Fazil  
Independent Member



Karen Helliwell  
Director of Integration



Rachel O'Connor  
Director of Planning  
and Performance



Stan Silverman  
Secondary Care  
Consultant



Carmel O'Brien  
Chief  
Nurse



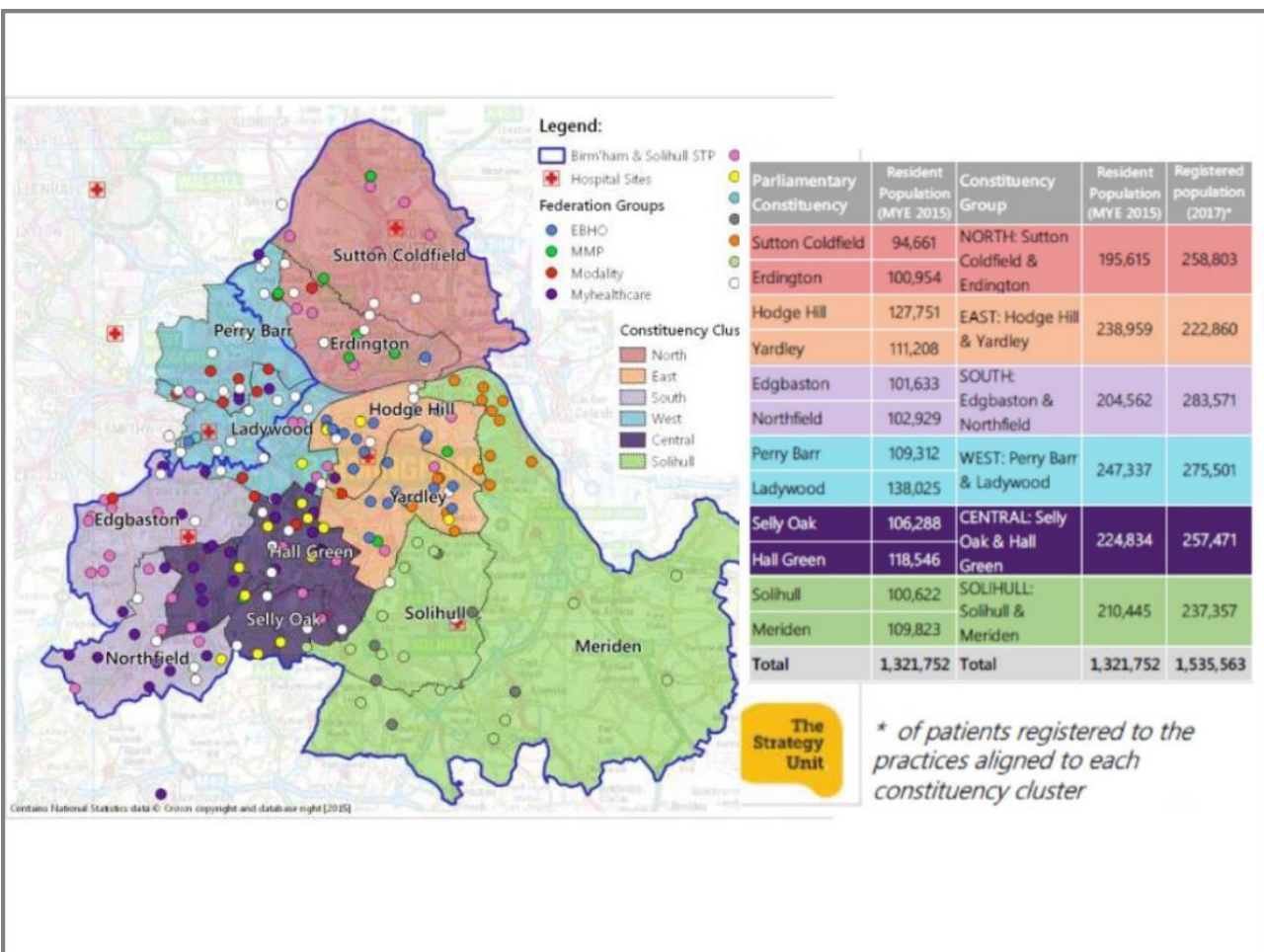
Dr Richard  
Mendelsohn  
Chief  
Medical Officer



Paul Sherriff  
Director  
of Organisational  
Development and  
Partnerships

# Overview of localities

- To enable 'place-based' commissioning we have organised the Birmingham and Solihull patch into six localities:
  - North
  - East
  - South
  - West
  - Central
  - Solihull



# Engagement

- Communications and engagement strategy currently under development.
- Incorporate recommendations from Healthwatch review.
- Using previous co-produced structure as a blue print.
- Looking at the most effective way of bringing together existing engagement forums.

Main opportunities for involvement:

- Primary Care Engagement Forum
- Solihull PPG Network
- Strategic Patient Partners
- People's Health Panel
- Experts-by-Experience
- Long-term conditions forum

Meanwhile.....

**Following on from this presentation**

**Ian Black**

**the Chair of Dorridge Surgery Patient Participation Group**

**has accepted an invitation to be a**

**Strategic Patient Partner**

**Watch this Space.**

Meanwhile.....

## FLU JABS!

It does not seem to be right mentioning Flu Jabs in August, but there is a need to give you some advanced information.

Three sessions are planned, one for the end of September, another in the middle of October and finally a session at the beginning of November. Dates will be advised to you in due course..

There is a fundamental change this year, in that, whereas there was one strain of serum covering all inoculations there will now be two, one for the 18 - 64 age group and one for the 65+ group.

The Joint Committee on Vaccination & Immunisations directions make it clear that the vaccine for the over 65's cannot be given to the under 65's, & conversely the under 65's vaccine cannot be given to the over 65's. A statement will be issued by the practice regarding this at the point the flu clinic dates are released. It is worth noting that this will relate to vaccines that the pharmacists will be supplied with also and are able to administer.

There is no change to the criteria for those up to 18 years of age.

Once the format of the 'Flu Jab' sessions are finalised we will advise you accordingly.

Meanwhile.....

## Extended Hours access to GP's.

Recently press reports highlighted the introduction of extended access to GP and nursing staff planned for implementation by the 1st October of this year.

Each practice is contracted to provide Primary Care from 8 am to 6.30 pm, Monday to Friday. Further provision is now to be introduced to cover up to 8 pm on those days and also for weekends.

A survey was carried out to determine patients needs, particularly at weekends and has resulted in the following:

- Across the Solihull Locality there will be centres where the extended access will operate, in our case these will be **Richmond Medical Centre**, 179 Richmond Road, Olton, B92 7SA and **Knowle Surgery**, Warwick Road/Lodge Road, B93 9LE.
- **Monday to Friday** - the service will operate from 6.30 pm - 8.00 pm.
- **Saturday and Sunday** - the service will operate from 8.00 am to 11 am.

The staffing of the extended access service will be drawn from all the practices who are members of the Solihull Alliance and the GPS group, consequently they may not be your usual Doctor or Nurse.

Your request for an appointment will be via Dorridge Surgery Reception who will determine the availability at the local centres.

As soon as further information is to hand, we will highlight this for you.

Meanwhile.....





## **Dr Keshri**

**Continues enjoying his time with us and will be here for another 6 months.**

## **Dr Khurshid**

**The Partners are pleased to announce the appointment of Dr Khurshid as a Salaried GP for the next twelve months, after finishing his training at the surgery.**



## **Dr Sima Patel**



**Hello my name is Sima and I'm the new F2 at the surgery.**

**I have carried out my F1 year at Good Hope hospital, doing rotations in cardiology, general surgery and respiratory medicine.**

**I also have a background in pharmacy, having work as a qualified hospital pharmacist prior to undertaking a career in medicine.**

**I have no definitive career plan but have a keen interest in emergency medicine and surgery and hope to persue a career in either those two fields or maybe a career as a GP.**

**I am looking forward to spending the next 4 months learning about general practice and developing myself further as a doctor.**

Meanwhile.....

Enjoy the Sun, drink plenty of water and stay cool.



PS

The Chateau is now REALLY, REALY dry and is STILL waiting for the Artistic re-construction teams to descend.

Previous issues can be found on the Surgery Website [www.dorridgesurgery.co.uk](http://www.dorridgesurgery.co.uk), just click on the button 'NEWS FOR YOU' in the left hand navigation bar.