



**British  
Lung  
Foundation**



**OFTEN USED AS AN UMBRELLA PHRASE  
COVERING A  
MULTITUDE OF LUNG CONDITIONS**

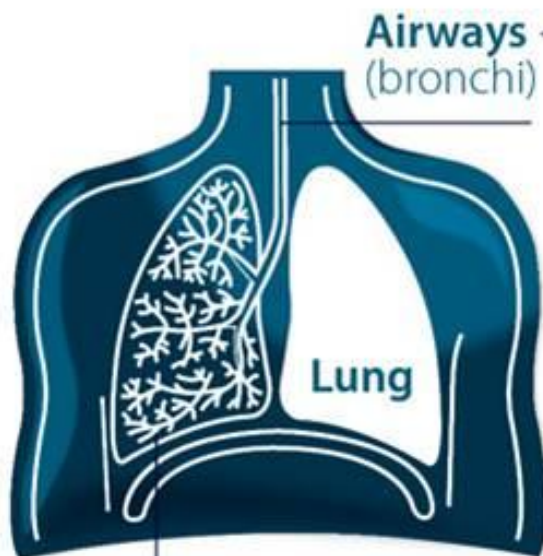
## Emphysema



Healthy



Alveolar membranes break down



Air sacs (alveoli)

## Chronic bronchitis



Healthy



Inflammation and excess mucus

# INITIAL CONSULTATION



# RESPIRATORY INVESTIGATIONS BEGIN



TESTS COULD COMPRISE:

A Blood Test.

Oxygen Saturation (SATS)

Blood Gas Test

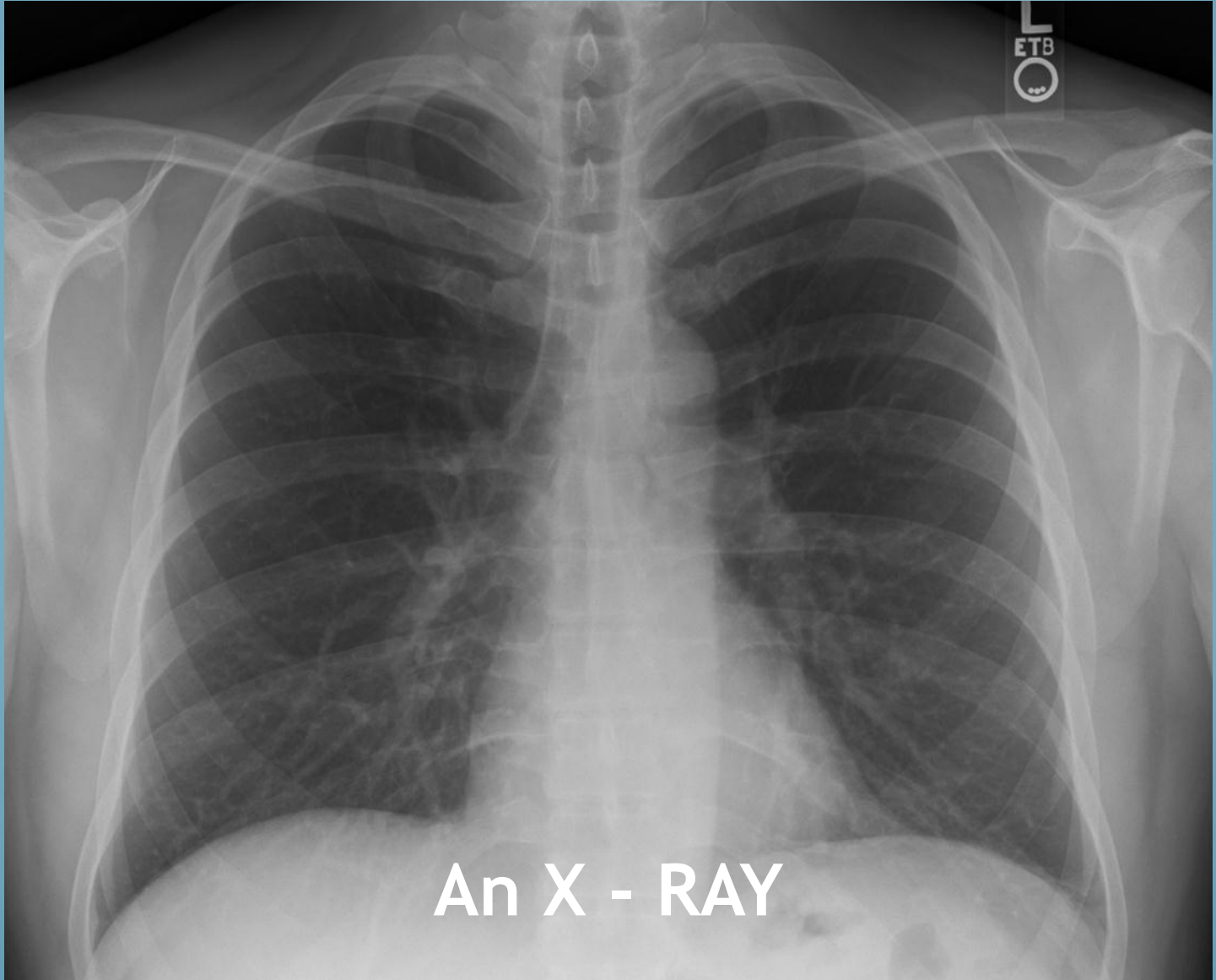
Blood pressure

And, of course a .....

# SPIROMETRY TEST



and maybe



An X - RAY



**When radiologists take a selfie**



**1 MILLION PEOPLE ARE KNOWN  
TO HAVE COPD**

**IT IS ESTIMATED THAT A  
FURTHER 2 MILLION ARE  
UNDIAGNOSED.**

**THE 3 MILLION REPRESENTS :**

**1 IN EVERY 21 OF US ARE  
AFFECTED.**

# BENEATH THE UMBRELLA

- *Alpha-1-antitrypsin deficiency*
- *Asthma*
- *Breathlessness*
- *Idiopathic Pulmonary Fibrosis*
- *Interstitial Lung Disease*
- *Lung Cancer*
- *Mesothelioma*
- *Obstructive Sleep Apnoea*
- *Pneumonia*
- *Pulmonary Hypertension*
- *Sarcoidosis*
- *Tuberculosis*
- *And there are many variations*  
*which can accompany the*  
*main diagnosis*

IT IS ESTIMATED THAT THE NUMBER OF  
PEOPLE WITH LUNG CONDITONS IN THE UK  
IS:

**1 IN 5**

THE MESSAGE

IS

GET DIAGNOSED EARLY



**PRESCRIBED MEDICATION**



# SOLIHULL COMMUNITY RESPIRATORY TEAM

# PULMONARY REHAB



FOR MORE INFORMATION  
PLEASE GO TO

[www.blf-org.uk/home](http://www.blf-org.uk/home)

Not on the web? Just phone

**03000 030 555**

For the BLF Help Line

(local phone rate)

Plenty of information, free booklets , blogs,  
pen pals etc.



**BreatheEasy**  
British Lung Foundation  
Support Groups

**Solihull**

helpline: 03000 030 555  
enquiries@blf.org.uk  
www.blf.org.uk



**British Lung  
Foundation**





**THANK YOU FOR  
YOUR TIME**

**ANY QUESTIONS?**

