

# DORRIDGE SURGERY



PATIENT REFERENCE GROUP  
No. 32 - March 2018

FOR YOUR INFORMATION

## Easter Bank Holiday

A reminder that the Surgery will be closed on Good Friday the 30th March and Bank Holiday Monday the 2nd April.

Re-opening on Tuesday the 3rd April.

If help is needed during the holiday please phone 111 for non emergency situations.



The Walk In Centre at SOLIHULL HOSPITAL will open from 8am to 8pm over the holiday period. The minor injuries unit is also operational over the Easter period as normal.

## Pharmacy opening times

Asda Pharmacy	Bosworth Drive	Birmingham		B37 5EX	0121 788 5710	0900-1800	Closed	0900-1800
Balsall Common Pharmacy	192-196-198 Station Road	Balsall Common	Coventry	CV7 7FD	01676 532927	Closed	1200-1500	Closed
Boots UK Ltd	239 Stratford Road	Shirley	Solihull	B90 3AH	0121 744 0495	0900-1730	Closed	Closed
Boots UK Ltd	Unit 4, Sears Retail Park	Oakenshaw Road	Solihull	B90 4QY	0121 733 6742	0800-0000	Closed	0900-1800
Boots UK Ltd	7 Mell Square	Solihull	West	B91 3AZ	0121 705 7553	0830-1800	Closed	1030-1630
Browns Pharmacy	15-17 The Parade	Kingshurst	Birmingham	B37 6BA	0121 770 3196	0900-1300	Closed	Closed
Browns Pharmacy	Dovehouse Parade, 351	Solihull		B91 1BQ	0121 706 1390	0900-1600	Closed	Closed
Dorridge Pharmacy	Unit 5 Forest Court	Dorridge	Solihull	B93 8JA	01564 772118	Closed	1000-1300	Closed
Haslucks Green Pharmacy	130 Haslucks Green Road	Shirley	Solihull	B90 2EH	0121 744 1141	Closed	1300-1600	Closed
Lloyds Pharmacy	545 Stratford Road	Shirley	Solihull	B90 4AJ	0121 744 5943	1000-1600	Closed	1000-1600
Morrisons Pharmacy	281 Stratford Road	Shirley	Solihull	B90 3AR	0121 745 9073	1000-1600	Closed	1000-1600
Morrisons Pharmacy	George Road	Solihull	West	B91 3BQ	0121 709 0163	1000-1600	Closed	1000-1600
Saydon Pharmacy	156 Green Lane	Castle Bromwich	Birmingham	B36 0BU	0121 681 1122	Closed	1000-1300	Closed
Superdrug Pharmacy	34 Mill Lane Arcade	Touchwood Court	Solihull	B91 3GS	0121 704 2733	0830-1800	Closed	1100-1700
Tesco Instore Pharmacy	21-35 Stratford Road	Shirley	Solihull	B90 3LU	0121 609 1347	0630-2230	Closed	0900-1800
Tesco Instore Pharmacy	1505 Stratford Road	Shirley	Solihull	B90 4EN	0345 6779624	0630-2230	Closed	0900-1800

Meanwhile.....

**The following PowerPoint presentation  
Will shortly be appearing on the  
TV screens in the Surgery.**



**Would you like regular  
information sent direct to your  
email account bringing you up  
To date on the developments and  
News surrounding your Surgery?**

**Your healthcare needs are  
important and you will have the  
opportunity to have your say via  
surveys and emails on the future of  
your local health scene.**

**All you need to do is:**

**Go to the Surgery Website**

**[www.dorridgesurgery.co.uk](http://www.dorridgesurgery.co.uk)**

**And click on the Blue ‘Patient Reference Group’**

**Button on the left hand navigation bar**

**And complete the registration form.**



**Your involvement means so much**

**THANK YOU**



Meanwhile.....

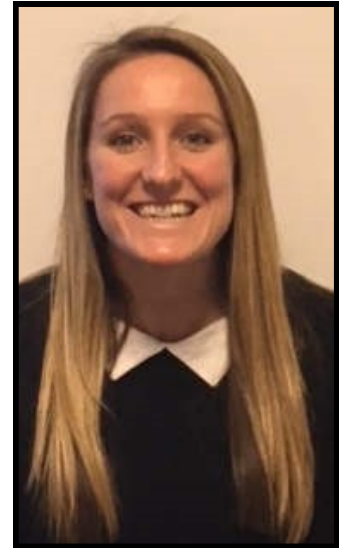


## **ON THE MOVE**

### **Dr Stephanie King**

We wave a fond farewell to Dr King, who leaves us on Tuesday next for pastures new.

We wish her every success in the future.



### **Dr Arjun Keshri**

Dr Keshri returns to the Practice for his final ST3 assignment.

He will be with us until the 1st week in August.

### **Dr Kelly Hibbert**

Is joining us  
A photograph will be in the Newsletter  
Shortly.

Meanwhile.....



PS. Many thanks to those of you who offered waders, water wings and your best wishes to help in the drying out of the Chateau, apparently Severn Trent water is quite wet and the triumphant return has been delayed until the 9th of April or thereabouts, given a fair wind.

Roll on Summer.

Previous issues can be found on the Surgery Website [www.dorridgesurgery.co.uk](http://www.dorridgesurgery.co.uk), just click on the button 'NEWS FOR YOU' in the left hand navigation bar.